

05/2018 DO468\_00 REV00

# BISAZZA

CEMENTILES

**Bisazza**

36075 Montecchio Maggiore  
Vicenza - Italia  
Tel. +39 0444 707511  
[www.bisazza.com](http://www.bisazza.com)

CEMENTILES

ATLANTIC  
SELECTION

**BISAZZA**

CEMENTILES

ATLANTIC  
SELECTION



Bisazza puts a contemporary spin on the traditional cement tiles. CEMENTILES is a collection designed by Paola Navone, Carlo Dal Bianco, Jaime Hayon, India Mahdavi, Fernando and Humberto Campana, Tom Dixon e David Rockwell.

The collection includes square (20x20 cm) and hexagonal (20x23 cm) shaped tiles. The tiles are 14 mm thick and made entirely by hand using high-strength cement which is blended with coloured oxides. The tiles, available in 29 colours and in a vast range of multi-coloured decorations, are suitable for internal floors and walls and commercial spaces with medium foot traffic.

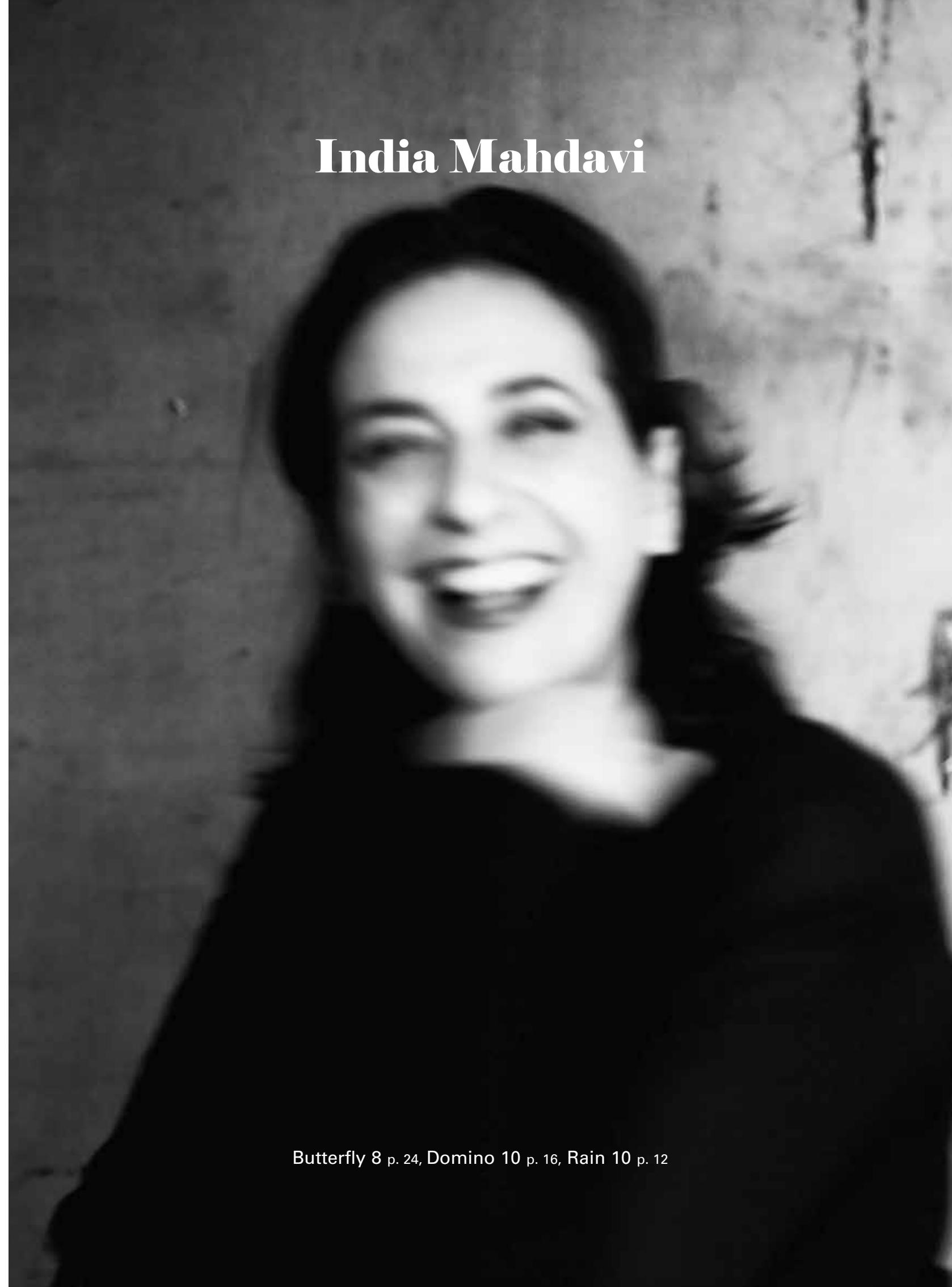
This catalogue presents a selection of the most representative decorations of the collection.

## Paola Navone



On / Off Teal p. 26

## India Mahdavi



Butterfly 8 p. 24, Domino 10 p. 16, Rain 10 p. 12

# Fernando & Humberto Campana



Brazilian Agata Blu p. 32

# Jaime Hayon



Lunas Bilbao A p. 20

# Carlo Dal Bianco



Cubic Iceberg p. 30, Gustav Marquinia p. 22,  
Honey Beton p. 18, Zag Vaniglia p. 14

# David Rockwell



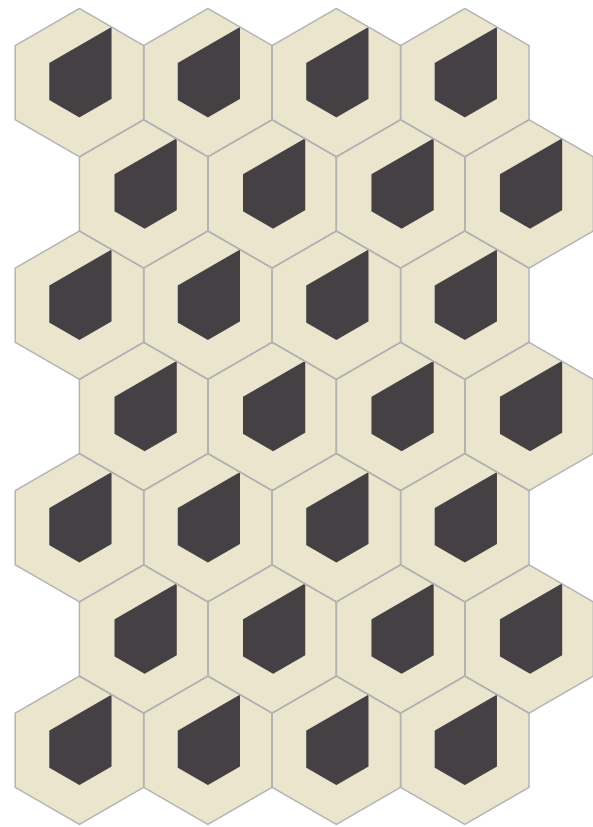
End Grain Ocean p. 34

# Tom Dixon



Grit Blue p. 28

design  
INDIA MAHDAVI



RAIN 10

Latte, Liquirizia





design  
CARLO DAL BIANCO

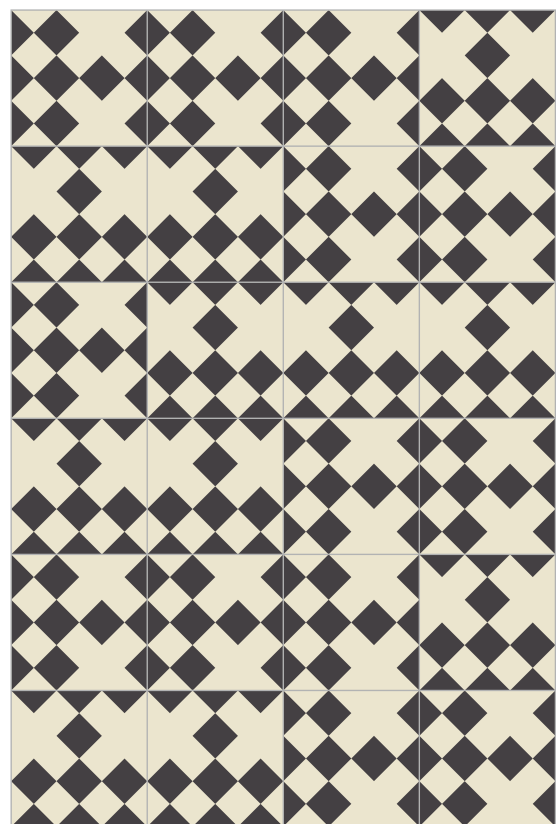


Latte, Liquirizia

ZAG VANIGLIA



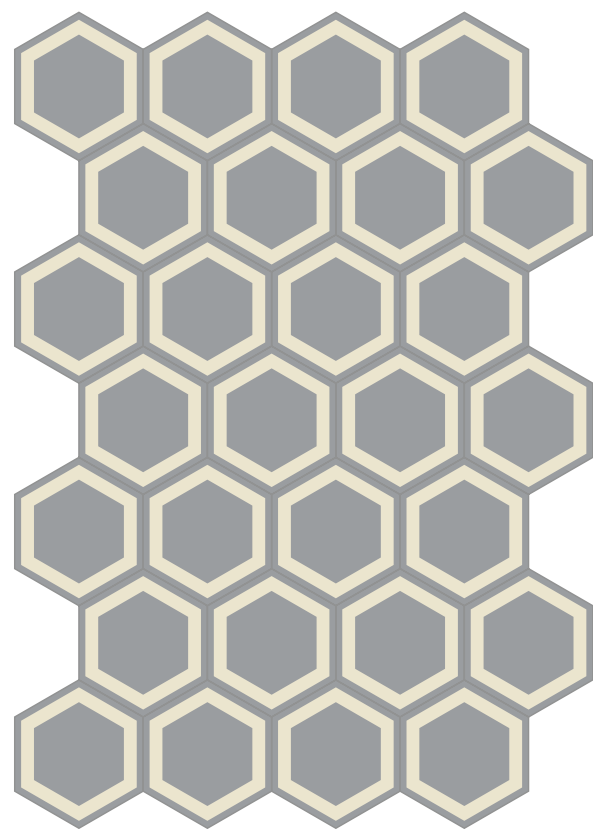
design  
INDIA MAHDAVI



Liquirizia, Latte

DOMINO 10

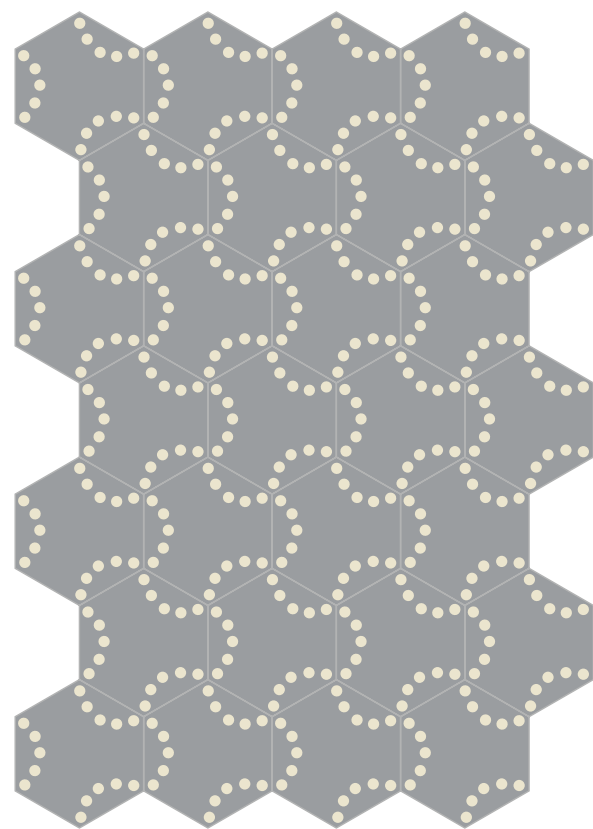
design  
CARLO DAL BIANCO



Macadam, Latte

HONEY BETON

design  
JAIME HAYON

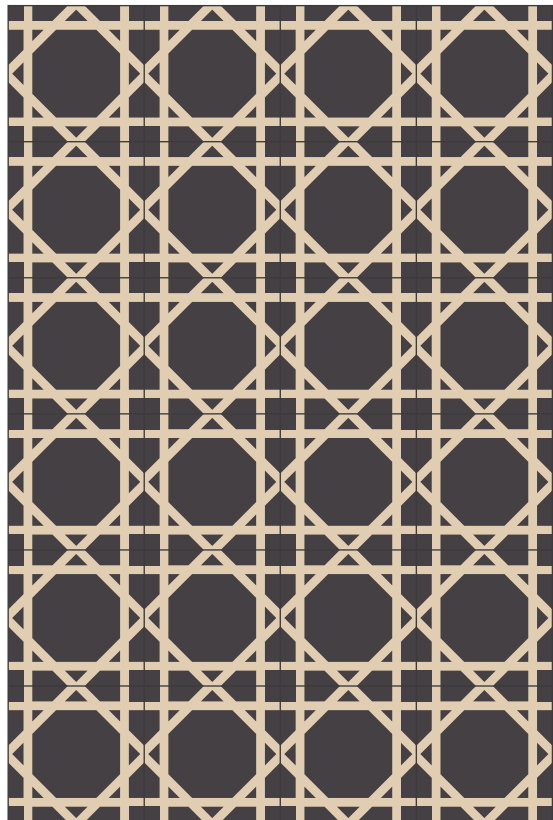


Macadam, Latte

LUNAS BILBAO A



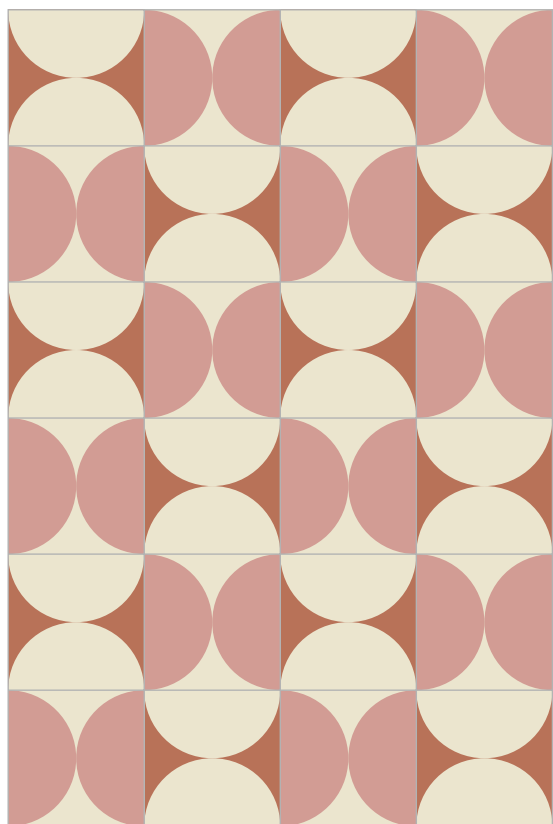
design  
CARLO DAL BIANCO



Liquirizia, Tan

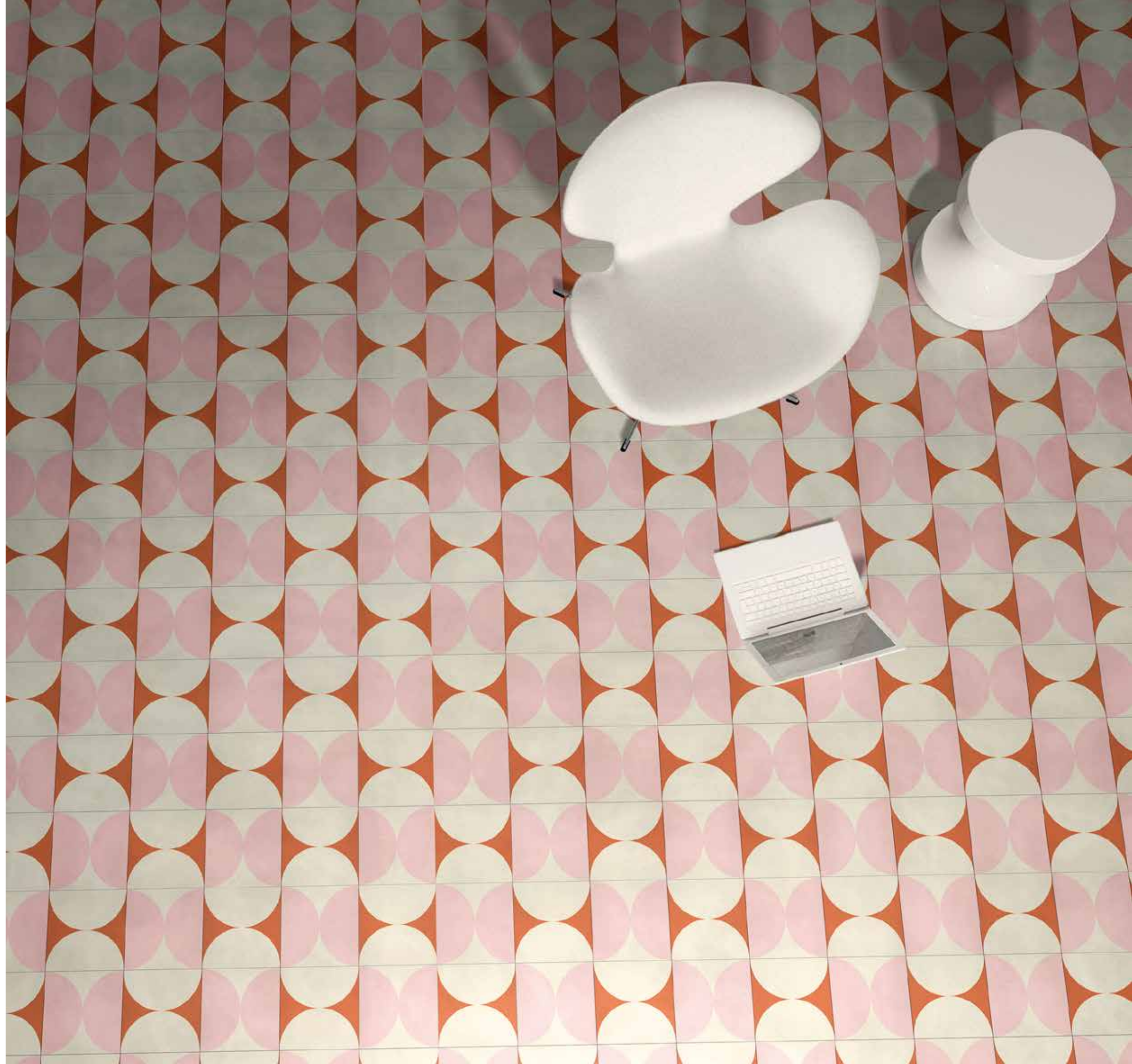
GUSTAV MARQUINIA

design  
INDIA MAHDAVI

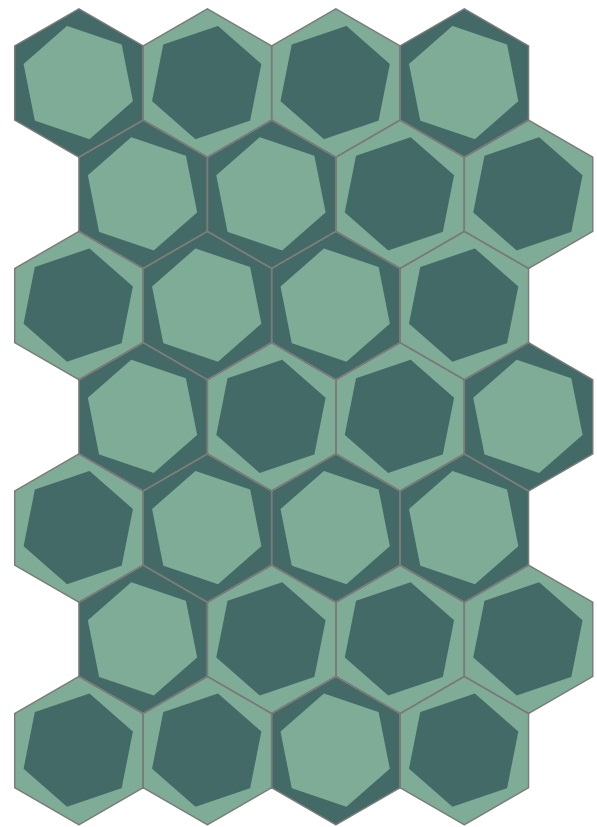


Fresia, Ruggine, Latte

**BUTTERFLY 8**



design  
PAOLA NAVONE

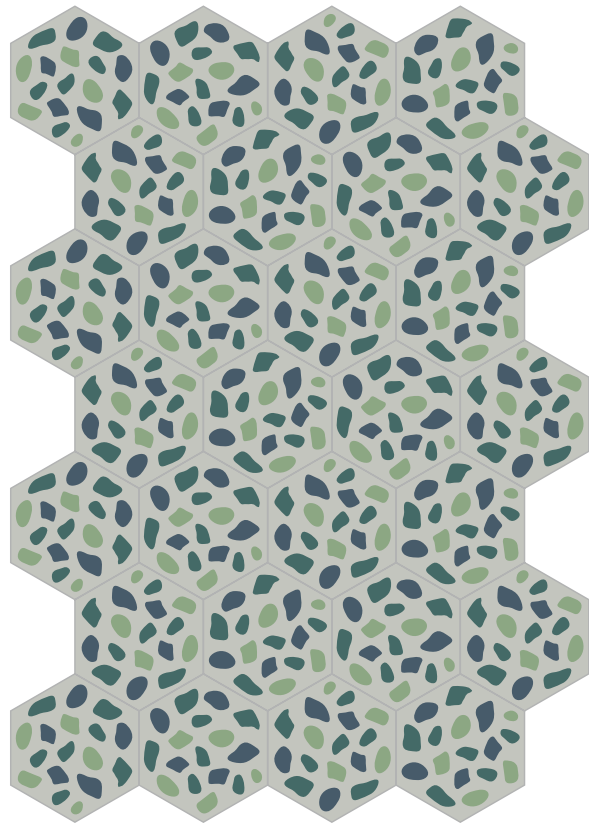


Petrolio, Carabi

ON / OFF TEAL



design  
TOM DIXON



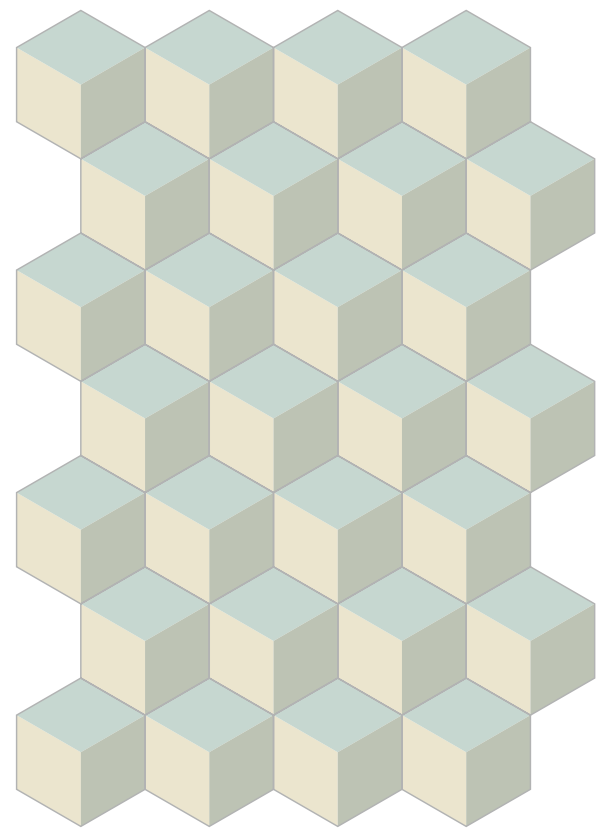
Petrolio, Prussia, Lichene, Nebbia

GRIT BLUE





design  
CARLO DAL BIANCO

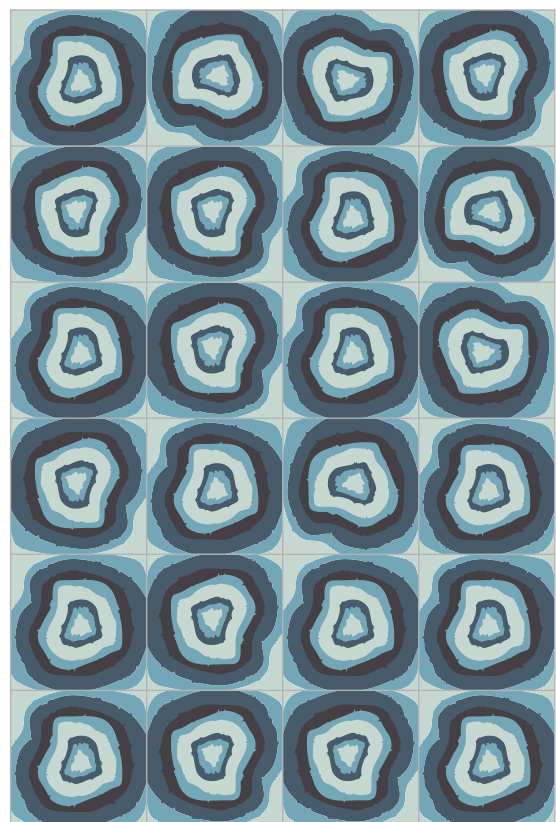


**CUBIC ICEBERG**

Latte, Cilestrino, Argento



design  
FERNANDO & HUMBERTO  
CAMPANA

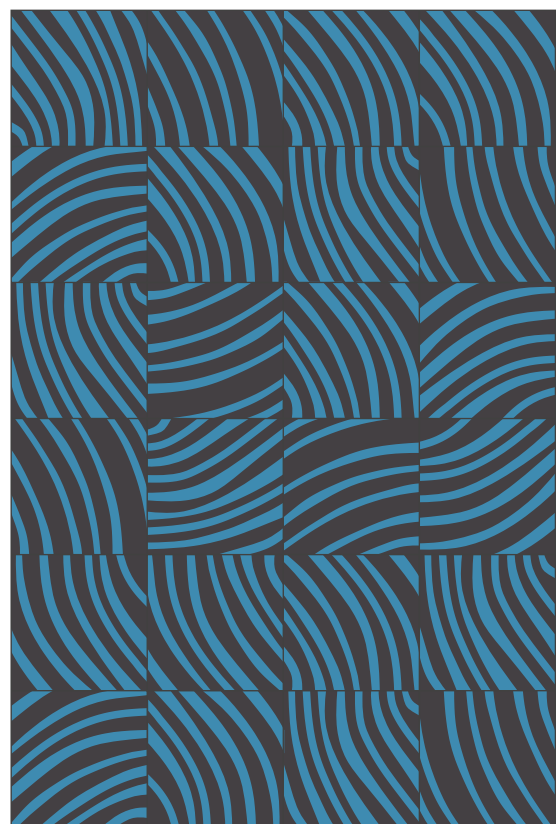


Cieistrino, Turchino, Prussia, Liquirizia

**BRAZILIAN AGATA BLU**



design  
DAVID ROCKWELL



Atlantico, Liquirizia

END GRAIN OCEAN


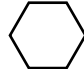

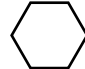


TECHNICAL DATA

## WARNINGS AND MAINTENANCE

<b>Directions for use:</b>	<i>Bisazza Cementiles</i> are intended for internal use.
<b>Adhesives and grouts:</b>	use semirapid or rapid cement-based adhesives, such as Bisazza Ad Hoc, and neutral-colored (grey) cement-based grouts.
<b>Treatment:</b>	the tiles are supplied already pre-treated with a water and oil repellent protective layer. After the installation, however, the surface requires two coats of finishing wax, before the final grouting.
<b>Routine cleaning:</b>	use neutral detergents. Never bleach or use aggressive, acid nor alkali cleaning agents.
<b>Regular maintenance:</b>	the surface should be waxed regularly, following the wax manufacturer's instructions.
<b>Product features:</b>	dimensional and chromatic variation is intrinsic of this production process which involves a number of manual steps and is a distinctive feature of the product.
<b>General warnings:</b>	tile colours may fade after prolonged exposure to sunlight. Do not sand or grind Bisazza cement tile flooring.

## WEIGHT AND DIMENSIONS

				
Size	200x200 mm	200x230 mm	7 7/8" x 7 7/8"	7 7/8" x 9 1/16"
Thickness	14 mm	14 mm	9/16"	9/16"
Joint	2 mm	2 mm	1/16"	1/16"
Weight	33,2 kg/sqm	33,2 kg/sqm	6.12 LB/SF	6.12 LB/SF
Pieces per carton	12	12	12	12
Quantity per carton	0,48 sqm	0,42 sqm	5.16 SF	4.52 SF
Weight per carton	15,6 kg	14,4 kg	34.62 LB	31.11 LB

## TECHNICAL FEATURES

	TEST	ESTABLISHED LIMITS	CEMENTILES
<b>Length and width</b>	EN 13748-1:2005 TM 5.2	+/- 0,3% max	Complies with the standards
<b>Thickness</b>	EN 13748-1:2005 TM 5.2	+/- 2 mm max	Complies with the standards, Th I
<b>Straightness of sides</b>	EN 13748-1:2005 TM 5.3	+/- 0,3% max	Complies with the standards
<b>Flatness</b>	EN 13748-1:2005 TM 5.4	+/- 0,3% max	Complies with the standards
<b>Water absorption</b>	EN 13748-1:2005 TM 5.8	Max 8%	7,2%
<b>Breaking load</b>	EN 13748-1:2005 TM 5.5	Ff <2,5 kN	Class 1
<b>Antislip value</b>	EN 13748-1:2005 TM 5.7		USRV 23*
<b>Fire reaction</b>	96/603/CEE		A1-fl
<b>Deep wear resistance</b>	EN 13748-1:2005 TM 5.6.1	<25 mm < 63/64"	24 mm 15/16"
<b>Stains Resistance**</b>	EN 14617-10:2005 Appendix A (CTI-81-7 App. D)		Within 1 hour, stain removed with a detergent
<b>Standard Test Method for Breaking Strength of Ceramic Tile</b>	ASTM C648-04		400 lbs

\*USRV: Unpolished Slip resistance Value.  
Indoor public areas with percentage < 6%  
\*\*Mustard, animal fat, peanut oil

All technical information regarding products is available in the technical section of the site: [www.bisazza.com](http://www.bisazza.com)

